

# Te Ngonga o te Piukara

*The Sounds of the Bugle*



PORT NICHOLSON BLOCK  
SETTLEMENT TRUST

*A newsletter for Taranaki Whānui ki Te Upoko o Te Ika*

*July 2012—Edition 41*

## Chairman's Comment:

Tena koutou katoa

We are pleased to provide this newsletter to update you on a variety of activities that have been happening. It has been a hectic few months for the Trust with a concentrated focus being on the urgent Waitangi Tribunal inquiry (Wai 2235), progressing initiatives through the Whole of Government relationships, reasserting mana whenua throughout the rohe, pursuing Deed of Settlement matters and a myriad of other matters.

Taranaki Whanui members have been involved in a number of events to celebrate Matariki/Puanga around the Wellington area including the start of a mural at Te Aro Pa, the planting of some 3,000 plants at Oruaiti Reserve, a waka ama regatta at Hikoikoi, a dinner at Te Raukura



and various other activities in conjunction with other organisations such as the Wellington City Council and Carter Observatory.

The nominations for the Trustee elections have now closed. Five positions are available as 'ordinary' vacancies and one position is available as an 'extraordinary' position due to the passing of Ta Paora Reeves. I would encourage all registered and verified adult members of the Trust to participate in the upcoming election. This is your

chance to elect Trustees who have experience and skills to contribute to the success of the Trust. Good luck to all candidates.

The Annual General Meeting will take place on Saturday, September 8, 2012 at Pipitea Marae commencing at 10am. Trustees will report on the financial year ended March 31, 2012 and update members on activities that have occurred from April to the meeting date.

I would urge members who have email addresses to contact the office and provide these – email is an efficient and cost effective method of communicating with members and as those for who we hold these details know, we have increased the amount of information we distribute using this method.

### *Inside this edition:*

- Page 2: Trustee Election
- Page 3: Wai 2235
- Page 4: Te Taiohitoa  
Kaumatua
- Page 5: Te Ra o Maui Pomare
- Page 6: Arbor Day
- Page 7: Harbour Islands
- Page 8: Pipitea Marae AGM  
Motu Kairangi
- Page 9: Te Aro Pa—Mural
- Page 10: Education  
Nga waka
- Page 11: Wellington Prison  
Te Puna Matauranga o Aotearoa
- Page 12: Oruaiti Reserve  
Contact Details

## Hikoikoi Matariki Challenge

On Sunday, July 1 Hikoikoi hosted its first club regatta to celebrate Matariki. The regatta was thankfully postponed from the Saturday to the Sunday due to the inclement weather forecast for that day. Weather plans aside, the regatta still managed to attract 110 paddlers on to the water for racing. The course for the race was designed to take in Matiu and Makaro Islands.

*continued pg 2*



# Hikoikoi Matariki Challenge *continued from pg 1*

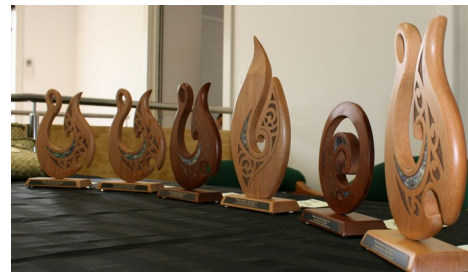
Trophies were sponsored by Port Nicholson Block Settlement Trust, Wellington Tenth's Trust, Wellington Tenth's Development

Trust, Palmerston North Māori Reserve Trust, Te Wharewaka o Pōneke Charitable Trust and the Hutt City Council.

Winds, Caffiend Cafe in Petone and kēte made by Hikoikoi Manaia Weavers.



The prizes were donated by Mojo, Whittakers, Wellington Ocean Sports Centre, Toni Huata, Wild



## Trustee Election—Candidates

The Chief Returning Officer for the Port Nicholson Block Settlement Trust elections has advised the confirmed nominations for the 2012 Trustee election. Nominations for the 2012 election of Trustees closed at 12 noon Friday, June 29, 2012.

Thirteen nominations have been received for the five ORDINARY vacancies on the Trust. The candidates (in alphabetical order) are:

FRUEAN Louana Jane  
JULIAN Sandra  
LOVE Ngatata  
LOVE-HANSON Edwina  
LUKE Wirangi Awhio  
MARSHALL Graeme  
McCONNELL Dawn  
MELLISH Liz  
MICHALANNEY Wiki  
MOEAHU Kura  
OKEROA Mahara  
POMARE Toarangatira  
TAMATI Howie

Nine nominations have been received for the one EXTRAORDINARY vacancy on the Trust, created by the passing of Ta Paora Reeves. The candidates for that position (in alphabetical order) are:



JULIAN Sandra  
LOVE Ngatata  
LOVE-HANSON Edwina  
MARSHALL Graeme  
McCONNELL Dawn  
POMARE Toarangatira  
RUAKERE Hokipera  
TAMATI Howie  
WAGNER Adrian

Elections are therefore required to select the six trustees. The elections will be conducted by postal, internet voting and ballot box at the annual general meeting. Voter packs, together with information about the candidates, will be sent to all registered and verified adult members of the Trust on Friday, August 10, 2012. Candidate names will be in

alphabetical order on the voting documents. Voting closes at 12 noon Saturday, September 8, 2012. Voting papers can be placed in the ballot box at the Trust's annual general meeting, to be held at Pipitea Marae in Wellington on Saturday, September 8, 2012.

# Wai 2235 - Contemporary Claim

The WAI 2235 urgent application was heard by the Waitangi Tribunal during the week of June 11. The Tribunal panel consisted of Judge Stephen Clark, Sir Douglas Kidd, Sir Tamati Reedy and Basil Morrison. The three day hearing was held at the Waitangi Tribunal to investigate and assess whether Trust negotiators had been misled by Crown negotiators during the Treaty Settlement negotiations. Judge Stephen Clark found the Crown had an obligation "to act reasonably and with the utmost good faith" and he granted the Trust application for this urgent hearing to be held.

The Crown has a responsibility to its Treaty partner to act in good faith. The view of the Trust was that contrary to that duty, the Crown actively suppressed or withheld information from Taranaki Whanui concerning their proposed offer to another iwi. The Crown has offered large tracts of land within the Port Nicholson Block and other rights in our rohe to Ngati Toa to settle their Treaty claims. This is a fundamental encroachment on the ahi ka and mana whenua rights of Taranaki Whanui.

Following are some of the statements made by Counsel for the Trust in the reply submission lodged on July 4, 2012:

*"... PNBCT, who expected that OTS would be the honest broker when in fact it utterly failed that responsibility."*

*"On the facts, there can be no argument about whether or not there was an agreement. Self evidently there was."*

*"As Sir Ngatata Love and the PNBCT saw it, this was Crown betrayal and treachery—and it was both."*

*"... meetings with Crown officials as recorded in the evidence were factious, with an unbending, uninterested and even rude Mr Philipson rebuffing any attempt at a negotiated outcome."*

*"... it is not possible to have maintained ahi kaa roa in the area of interest without asserting exclusive mana whenua interests."*

*"Mr Ponter, OTS clearly decided to take a risk—but that risk has now led to a calamitous outcome."*

*"... the Crown closing submission does little to meet the allegations of Treaty breach ...".*

It was evident that the Tribunal panel were fully considering all the information put before them. They asked probing questions of witnesses under cross-examination and when not clear, made sure they understood the responses by asking further questions.

The Port Nicholson Block Settlement Trust has submitted its written closing submission to the Waitangi Tribunal, with the Crown/Ngati Toa lodging their closing submissions after reviewing the Trust's. The Trust has exercised its right of reply with a final submission on July 4. The timeframe is in the hands of the Tribunal regarding the issuing of its report.

We received an enormous amount of support during this period and we would like to thank everyone for their tautoko which came in varying forms - those who attended the hui prior to the hearing, those who attended the hearing or those who took the time to send email messages of support. A sample of a few of the emails follows:

<p><i>Yes our whanau are one of those that would love to be there to support the kaupapa that affects us all even though we are here in the Far North, but we will be there in mind and thought. Ma te Atua Koutou i manaaki mo to koutou mahi taimaha mo tatou te Iwi katoa. Nga mihi nui rawa kia koutou.</i></p>	<p><i>KIA KAHA, KIA TOA, KIA MAIA, KIA MANAWANUI!!!!  WELL DONE OUR WHANAUNGA</i></p>	<p><i>Kia ora for keeping us informed. Emailing is a wonderful media for us living in Australia. We wish the Trust every success in its submission to the Waitangi Tribunal.  You have our support in prayer also.</i></p>
---	---	--





## Te Taiohitoa o Te Awe – Young Champions

The Trust has partnered with Te Awe Maori Business Network in supporting Year 11-13 Maori students in the Wellington Region with their career aspirations through work placements and mentoring. We have received a total of 27 applications from students with a total of 16 mentors/businesses offering their time in their workplace for up to six months.

One student, Lily Simmons-Donaldson, Year 12 Student at Wellington East Girls College (Taranaki, Ngati Porou) was placed with the Maori Party for one week (full-time) and was exposed to the different units within the Party. Some of the tasks included: research, drafting correspondence for the Minister, customer queries/reception, understanding the parliamentary and decision-making process, tour of parliament, and attending a public conference with Hon Minister Tariana Turia. Following is the good news snippet contained in the Maori Party's e-Newsletter this month.

### *Te Taiohitoa o Te Awe comes to Parliament*



*Te Awe, the Wellington Maori Business Network, in collaboration with the Maori Party Parliamentary Office set up a week-long work experience for Y12 Wellington East Girls' College student, Lily Simmons, as part of the Taiohitoa o Te Awe programme. Lily spent the week in each of the three MP's offices and got to experience a day in Tariana's shoes as she accompanied her to a number of engagements. It was a pleasure to have Lily amongst us during that week, and we wish her well for the future.*

The Port Nicholson Block Settlement Trust in conjunction with the Wellington Tenth's Trust and Palmerston North Maori Reserves Trust has set up a freephone line for Kaumatua that may have queries or concerns pertaining to accessing government and social services support.

The Freephone line was set up in response to a Kaumatua Hui held in 2011 to assist with co-ordinating queries or concerns from Kaumatua in relation to government and social service agencies. Contact us on 0800 767 8642 or email: [kaumatua@portnicholson.org.nz](mailto:kaumatua@portnicholson.org.nz).



**KAUMATUA FREE PHONE**  
**0800 767 8642**  
**(0800 PORTNIC)**

**Nau Mai Haere mai**

**Call us on our FREE PHONE number above  
or email [kaumatua@portnicholson.org.nz](mailto:kaumatua@portnicholson.org.nz)**

# Te Ra o Maui Pomare

The closest Saturday to June 27 (the day Māui passed away in 1930) each year is recognised as Te Ra o Maui Pomare.

Sir Maui Pomare KBE, CMG (1875–1930), of Ngati Mutunga and Ngati Toa, health reformer and our first Maori medical doctor, was known for his efforts to improve Maori health and living conditions. He was also a formidable politician and member of the Young Maori Party and the instigator of investigations into Taranaki land confiscations.



The Trust together with the Wellington Tenth Trust and Palmerston North Maori Reserves Trust organised for a bus to take Kaumatua and Taranaki whanui from Wellington to Manukorihi Pa to be part of this significant event. The journey began with an early morning departure from Hikoikoi, stopping off in Wellington, Paraparaumu, Waikanae and Otaki for passengers and arriving at the marae on the Friday afternoon in time for the 3pm powhiri. As part of the second module of their course, the Te Kura Taiahoaho

class at Whakarongotai Marae were part of the group that attended Te Ra o Maui Pomare. Students had been learning about this tupuna.

This occasion was a time to remember and acknowledge those who had passed away the previous year and to bring our 'mate' of the year together to acknowledge them appropriately in the process of 'hari mate'. We supported the Reeves family to take the kawē mate of Ta Paora Reeves onto Owae Marae on the Friday afternoon.

The proceedings on Saturday began with a brief mihi to welcome people into the whare, Te Ikaroa-a-Maui. A short service was held leading up to the laying of the wreaths at the base of the Maui Pomare monument, this was then supported by the performance of the old waiata poi of Parihaka, associated with Te Whiti o Rongomai and continued by the poi group 'Te Puapua'. The Hon Chris Finlayson, Hon Tariana Turia, Maori Trustee Jamie Tuuta, and the National Council of Maori Nurses each had an opportunity to speak and the Trust Chairman, Sir Ngatata Love also spoke during the proceedings.

Our group returned by bus on Saturday after the hakari, with the bus driver just making it in to the Newlands depot for petrol however was unable to park the bus on the right side of the pump so the bus wasn't able to be refuelled! No one seemed to mind with the shuttles that followed as the weekend back in Taranaki had filled everyone's cup to the brim.

## Families Commission

A Memorandum of Understanding was signed with the Families Commission on May 30, 2012. The MoU provides the opportunity to consolidate existing relationships with Families Commission based on areas of mutual interest. Some of the work related focus areas include:

- ♦ Strengthening whanau policy and research – opportunities such as exchanges/internships
- ♦ Advocacy and engagement on policy and

- community matters impacting whanau/iwi
- ♦ Building staff capability through the delivery of cultural services – eg noho marae, field trips to areas of cultural significance and te reo Maori classes



# NZ Architecture Award—Te Raukura

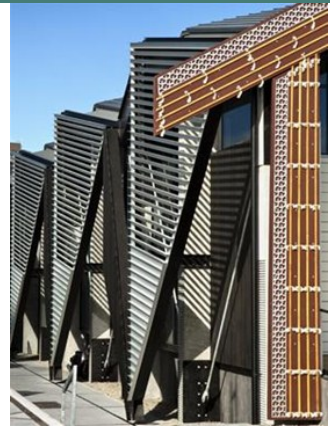
The New Zealand Institute of Architecture Awards provide a snapshot of the best of New Zealand architecture each year. These awards recognise projects for their design rather than size and cost and the award winners range from very small projects to very large ones.

This year Te Wharewaka took out the 2012 New Zealand Architecture Commercial Architecture award. It is one of 20 projects nationally to receive this award. Of note is that two of the 20 projects are Maori owned – those being the Wharewaka and the other being the Novotel Auckland Airport (Tainui Group Holdings).

This award now sits on the mantle of *Architecture+* alongside two other architectural awards received in 2011 - the New Zealand Institute of Architecture Wellington Public Architecture Award, and the Wellington Civic Trust Enhancement or Protection of the City's Built Environment Award.

## **Citation**

*After 170 years of European settlement Maori once more have a presence on Wellington's waterfront. Prickly and armour-plated, Te Wharewaka assertively claims its place next to Victorian neighbours by the lagoon in the Taranaki Wharf West precinct. The building takes its name from the ceremonial waka it houses but, as a contemporary hybrid of traditional Maori spaces, it also accommodates and generates income from various commercial uses. The strength of form generated by the confident juxtaposition of hipped and gabled roofs and the staunch, well-detailed steel cloak imposes coherence on multiple programmatic requirements.*



## Arbor Day & World Environment Day

Arbor Day saw the official start of Matariki celebrated by mana whenua and Wellington City Council.

A community event was held with a significant planting taking place at Oruaiti Reserve, Seatoun on June 5, 2012.

This reserve is owned by the Trust and jointly managed by the Trust and Wellington City Council.

Our Kaumatua, Sam and June Jackson, officiated alongside Wellington's Mayor Celia Wade-Brown.

Some 3,000 plants were planted towards a greener tomorrow on this wet and wild Wellington day. The weather didn't deter the local kura kaupapa Maori and surrounding schools, and other community representatives from bringing their spades and digging in to help plant shrubs and bushes that had been provided as part of the Charles Plimmer Bequest awarded for the beautification of the reserve.

Both Wellington City Council staff and Port Nicholson Block Settlement Trust staff also took part on the day.





# Harbour Islands

## **Volunteers for Matiu Island**

There are a number of volunteer programmes on Matiu Island that you could get involved with:

### ***Whanau volunteering***

Any whanau can get together in groups of two to 15 and book a day volunteering on the island at any time. Simply send the Island Rangers an email at [matiusomes@doc.govt.nz](mailto:matiusomes@doc.govt.nz). The work usually involves track maintenance, weeding, painting, beach clean, just about anything.

### ***Karobusters***

This group goes on the island about five times a year staying overnight on the weekend to remove Karo and other weeds. This is a social group with a BBQ on the Saturday night. If you are interested in Karobusters why not send an email to Dave Cox at [coxfamily@paradise.co.nz](mailto:coxfamily@paradise.co.nz).



### ***Eastbourne Forest Rangers***

The Eastbourne Forest Rangers work a roster system throughout the year assisting the Island Rangers with meeting visitors, patrolling the Island and conducting guided walks. If you are interested in this then contact Ray Smith [rmsmith@xtra.co.nz](mailto:rmsmith@xtra.co.nz).

### ***Tree Releasing***

This is a long term commitment to take on a small area of the island and care for the special trees and other plants in that area. Some plant identification skills are required. The volunteer will need to visit the island two or three times a year.



### ***Summer volunteer ranger 2012/2013***

The summer volunteer ranger position for 2012/2013 has been filled. Terese McLeod will have the role in December, James Hansen through January and Mark Mobbs for the months of February and March.

### ***Trainee Ranger Position October-December 2012***

A trainee ranger position is now available from October through to December. This position will assist the Island Rangers through the busy summer period. If you are interested in this role, please contact the Island Rangers at: [matiusomes@doc.govt.nz](mailto:matiusomes@doc.govt.nz).

### **Signing of management plan**

The management plan for the Harbour Islands is in its final stages of preparation. The signing is to take place on August 15,

2012. The signing is the result of many months work by Kim Skelton and Morrie Love working in conjunction with the Harbour Islands Kaitiaki Board (Mark Te One, Hon Mahara Okeroa, Liz Mellish, and Department of Conservation board members Rob Stone, Alan McKenzie and Dr Nicola Nelson), and completing workshops etc. to bring this to fruition.

### **Harbour Islands blessing of infrastructure**

The blessing of some of the infrastructure on Matiu Island planned for May 10, was rescheduled to a week later due to the East by West ferry not operating during bad weather. The blessing of the turbine, solar energy panels and the upgrade of the water system went ahead in much better weather than the previous week.



# Pipitea Marae AGM

The Annual General Meeting of the Pipitea Marae Charitable Trust is being held on **Saturday, July 21, 2012**. The meeting will start at 10am with morning tea available from 9.30am. All welcome!

Over the past three years Trustees have undertaken a significant amount of deferred maintenance including the installation of a new heating system, installation of a new oven, upgrading of bathroom facilities, painting, etc. Further work is planned for the coming 12 months including the replacement of the entire roof.



## National Park for Motu Kairangi

The Trust is working with the Crown and other interested parties on a proposal which will see the 76 hectares of land owned by the New Zealand Defence Force at Motu Kairangi turned into a National Park.

Preliminary discussions have led the Government (through the Minister of Culture & Heritage, Hon Chris Finlayson) to investigate the development of special legislation to create a national park.

As members may be aware, the area includes historically significant sites. Some of particular

interest to the parties involved are the former Fort Balance with its remnants of times past. The vision is that this particular site be restored. There are of course sites of significance to Maori on the peninsula including former pa sites.

As well as ensuring that Maori sites are acknowledged, protected and enhanced as part of the overall development of the national park, the Trust contemplates that the land at Shelly Bay will become a critical commercial site for visitors to the national park.

## Opau Urupa, Makara



Further to the story in the last edition of this newsletter, we are pleased to advise that the resource consent for the Opau Urupa at Makara has been lodged with Wellington City Council.

Once this is approved work will commence in earnest on the establishment of the urupa.

A management committee is to be set up and to be responsible for the urupa.



# Mural—Te Aro Pa

Te Aro Pa was established by Ngati Mutunga of Taranaki in 1824. After they left the Wellington area to reside in Wharekauri (Chatham Islands), Taranaki whanui took up residence. An earthquake in 1855 raised the land and drained the low-lying areas of Te Aro. The population of the Pa dwindled rapidly from that time due to the impact of colonisation and wrought by the Taranaki land wars. Right up until the late 1880's Te Aro Pa was one of the largest Maori communities in Wellington.

In 2005, during construction of a new apartment complex, the remains from Te Aro Pa were uncovered under a two storey building that had stood in Taranaki Street for 100 years. Te Aro Pa visitor centre displays the preserved foundations of two



*Left to right at Te Aro Pa: Klyffi-Dee Curreen, Bohdi Vincent, Pekaira Rei, Kaira Love and Ra Vincent*

whare ponga (buildings) and other items from the old pa site.

Te Aro Pa mural began with a workshop in May 2012. This exciting kaupapa was an opportunity for our youth to work with professional and internationally recognised artists Ra and Bohdi Vincent. It also formed part of the Puanga/Matariki celebrations.

Four tauira worked with Ra and Bohdi at the workshop, practicing the different kowhaiwhai patterns that have been used to create a motif of their own design which was later transferred on to a section within the Te Aro Pā mural which has been painted on the exterior of the adjoining building.



‘Whare Whakairo’ is decorated with kowhaiwhai that emphasise the spirit of the buildings, location, our relationship with the coastal waters and our role as kaitiaki of the land. It uses details like ‘Puwerewere’ (walking lightly) and ‘Raperape’ (forward moving) in subtle colour ways to give the building a carved feel. These motifs are held together with takarangi as a hint of a spiral joining the kaupapa.

Te Aro Pa visitor centre is open daily from 9am to 5pm and is located at 39 Taranaki Street, Wellington. The mural on the wall of the

adjoining building at Te Aro Pa is now complete and an opening celebration has been organised for the week of July 9.

This collaborative project included the Port Nicholson Block Settlement Trust, Wellington Tenth Trust, Wellington City Council, The Ahikaa Learning Centre, The Body Corporate of the building involved, the artists Bodhi and Ra Vincent, and the tauira involved (Toka Rei, Mairangi Rei, Klyffi-Dee Curreen and Kaira Love).

## Education Initiatives

### Youth Project – The Learning Centre

The Trust has been working with the Learning Centre to assist and support rangatahi through the vehicle of performing arts and drama to achieve their career, employment and training aspirations for the future.

Engagement of Taranaki Whanui rangatahi in internships and mentoring placements with Wellington City Council has commenced with other opportunities being sourced in the area of media,

A series of workshops and whanau hui are being led by the Learning Centre in conjunction with Strathmore Community Group (E Tu Ora) which will culminate in a drama production scheduled for early November 2012.

### Education - Te Ara Reo Māori Year Two

The Te Ara Reo Māori Year 2 has completed its noho marae for the year, which was held at Pipitea Marae on the weekend of May 26, 2012. There were over 100 students who attended from five separate classes.

The noho marae activity was focused on Whakawhanaungatanga (relationships), Tikanga (cultural concepts and etiquettes), Kōrero Tīpuna (ancestral histories), Mahi-a-Toi (string games and fun past times), and Whakangahau (entertainment).

Ben Ngaia tutors one of the four classes held each evening at the Trust offices commented that “it was a pleasure to be a part of so many enthusiastic students who displayed a real commitment to the Te Ara Reo Māori kaupapa”, and that “all the students have shown a strong level of commitment to this course, this is captured by the completion of the homework assignments and by the high attendance at each class. The active participation from each student is fantastic.”



## Te Hononga Waka



A small but keen contingent supported the waka launch as part of the Matariki celebrations on Sunday, June 24, 2012 at Te Raukura.

This was the last outing for Te Hononga for the winter period. Regular weekend paddling with recommence when the weather improves.

A feature-length documentary film *Mana Waka* made to launch New Zealand's 1990 sesqui celebrations was shown in the hui space on the ground floor of the Wharewaka later in the morning.

The evocative soundtrack and skilful direction and editing brought wonderful silent images to life, building them in a story which was a spellbinding celebration of the slow canoe building process and the vision it symbolises.

The film is regarded as a gift from the Maori Queen to the people of New Zealand. Ownership remains with the Turangawaewae Trust.

If you are interested in becoming a paddler on either Te Hononga or Te Rerenga Kotare, you should contact Morrie Love (morrie@rauakura.co.nz). We are particularly looking for male paddlers, so why not give it a go?

## Give us your email!

It's really important to us that we communicate with members in a timely and efficient manner. Email is a great way of achieving this. So to all of those with email, make sure you give us your address—we are using email almost daily to send information to members that may be of interest to you.

We really want you included, so if you have an email address and you're unsure whether we have it, why not send us an email or give us a call:

Email us: [reception@portnicholson.org.nz](mailto:reception@portnicholson.org.nz) or  
Phone us: 0800 767 8642 or 04 472 3872

*Do it now—send that email!*

If you have a child turning 18, or who has turned 18 they need to complete their own registration form, sign it and return it to us—we can take it from there.

## Te Puna Matauranga o Aotearoa

Our Education Coordinator, Neavin Broughton, has spent six weeks with the Public Programmes team at the National Library working on kete (knowledge base) that explores Te Ahumairangi and its neighbourhoods.

The kete will be the tool used to develop and inform Public Programmes staff so that they become well-versed in the rich history and stories of the area and contribute to the manaakitanga experience for visitors to the National Library of New Zealand ground floor area - Te Ahumairangi.

These stories will be illustrated through tours, workshops, learning programmes and informal encounters.

## Parakuihi

As we have advised in an earlier edition of *Te Ngonga o te Piukara*, we have re-established an occasion that was held many years ago, where Taranaki Whānui whānau would get together for breakfast.

The purpose of the parakuihi is to reconnect and have a chat about what's happening, who's working where and things to be aware of, mahi wise, business wise, iwi wise, politically wise.

Parakuihi are scheduled for the first Friday of the month and are held at the Karaka Café at Te Raukura on the waterfront. Attendees who wish to have breakfast do so at their own expense. It's a great chance to catch up and have a korero. For further information please contact Neavin Broughton [neavin@portnicholson.org.nz](mailto:neavin@portnicholson.org.nz).

## Wellington Prison

As members may be aware, the Department of Corrections have announced that they will be closing Wellington Prison from November 30, 2012. This closure has come as a national review of correction facilities has been completed in a cost reducing effort by the department.

The Trust has been formally advised that the department will be selling the property once it is closed.

The property is a 'right of first refusal' option for the Trust through the Deed of Settlement.

The Trust has indicated to the department that it is interested in purchasing the property. However a full Crown disposal process will need to be completed before full consideration can be given to any possible purchase of the site.



## Bruce Farquhar— Farewell

Bruce Farquhar joined the predecessor entity of the Trust during the negotiations with the Crown in 2008, immediately following the signing of the Agreement in Principle in late 2007. Now after four and a half years, Bruce has decided to return to a career in law and has taken up an opportunity to join a firm based in Napier. This relocation means Bruce and his family move closer to their wider whanau.

On behalf of his colleagues, Trustees and members we express our appreciation for the significant contribution Bruce has made and wish him, Valma, Rachel and Jessica every best wish for the future.



## Oruaiti Reserve - Boardwalk

Excellent progress is being made on the building of the outside boardwalk at Oruaiti Reserve. As at July 7, all the bearers are in place. The mooring posts are also in place and secured. The joists were in place on July 8, with the timber outside retainers in by the end of the week. It is hoped that the boardwalk structure will be near completion soon but is weather dependent.



## Venues of Choice



[www.pipiteamarae.co.nz](http://www.pipiteamarae.co.nz)  
Bookings: 027 4512186



[www.wharewakaoponeke.co.nz](http://www.wharewakaoponeke.co.nz)  
Bookings: 04 4998160

## Contact details

Railway Station Social Hall, 55 Waterloo Quay, Wellington

✉: FREEPOST 166974, P O Box 12164, Wellington 6144

☎: 0800 7678642 or 04 4723872

Fax: 04 4723874

Email: [reception@portnicholson.org.nz](mailto:reception@portnicholson.org.nz)

🌐: [www.pnbst.maori.nz](http://www.pnbst.maori.nz)